

# St. Pauls Parish NEVIS

Series: NIAPPNRE S01  
Sheet: NEVIS  
Edition: 1-2007

1895000

17°8'45"N

17°7'30"N

62°35'0"W

62°35'0"W

62°36'15"W

62°36'15"W

335000

335000

62°37'30"W

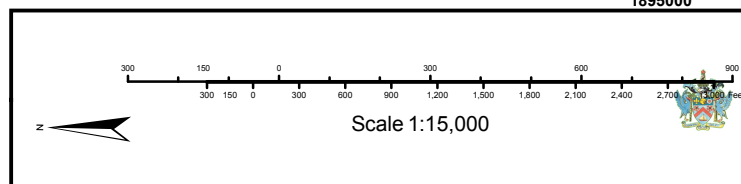
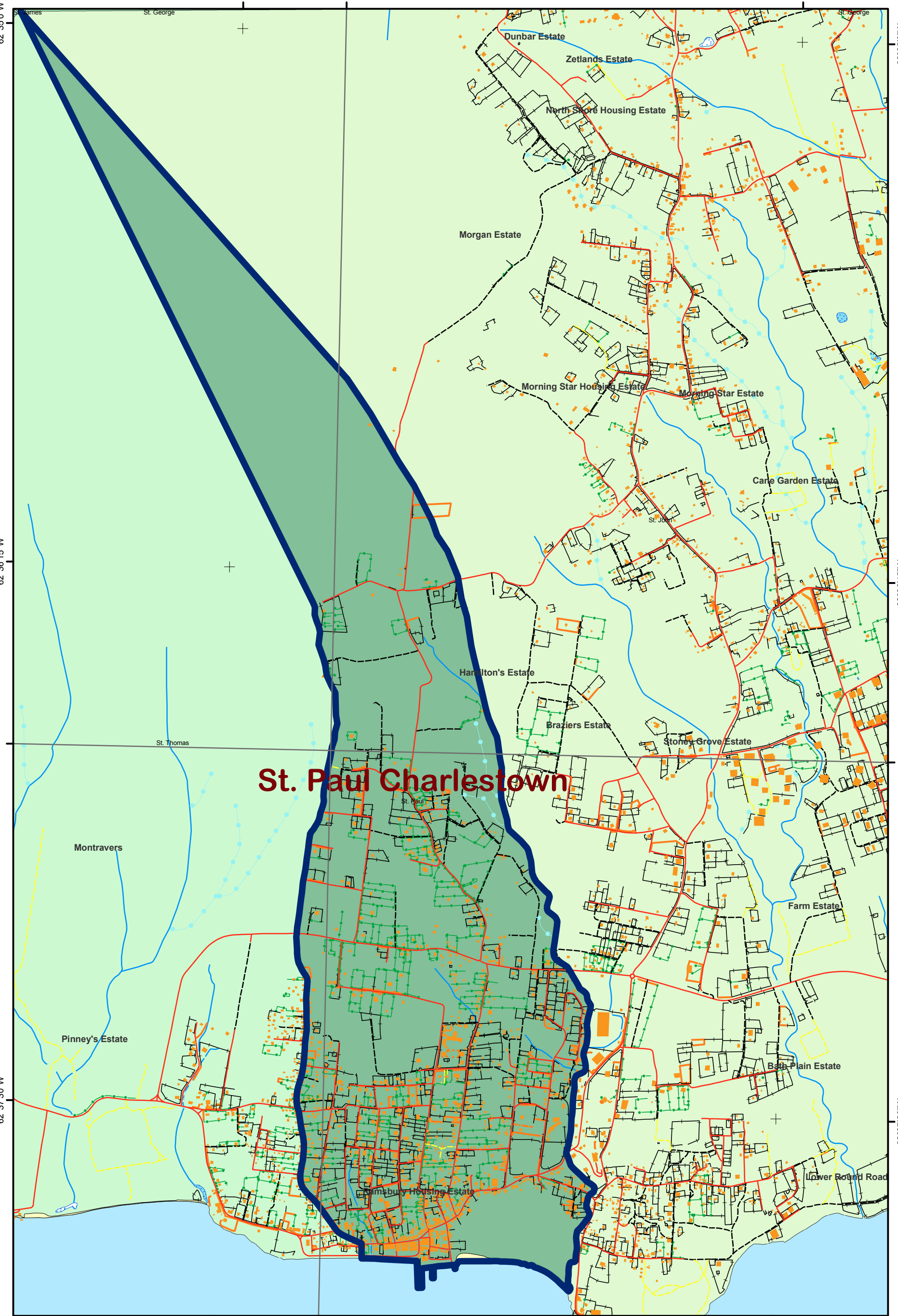
62°37'30"W

17°8'45"N

1895000

17°7'30"N

## St. Paul Charlestown



<p><b>Publication</b> Published by The Nevis Island Administration Government of St. Kitts and Nevis 2007</p> <p><b>Notes</b> Paper copies and digital data can be obtained from: Department of Physical Planning Natural Resources and Environment Main Street Charlestown, Nevis</p> <p><b>Geographic Position</b> The island of Nevis is located at approximately 17 degrees 10 minutes latitude and 62 degrees and 35 minutes west longitude</p>	<p><b>Additions or Corrections</b> Users noting additions or corrections are asked to mark them on the map and send to: GIS Office Department of Physical Planning Natural Resources and Environment Charlestown, Nevis</p> <p><b>General Information</b> The representation of road or track is no evidence of the existence of a right of way. Buildings are shown according to roof outline. The representation of boundary line is not necessary except the legal boundary on the ground.</p>	<p><b>Height Depiction</b> Contours are in feet and shown at 10' vertical interval. The accuracy of contours cannot be guaranteed in areas of high vegetation. Contours are shown through buildings for the purpose of continuity only.</p> <p><b>Map Sheet History</b> 1st Edition prepared by the Department of Physical Planning Natural Resources and Environment Charlestown, Nevis Nevis Island Administration Federation of St. Kitts and Nevis</p>	<p><b>Grid Data</b> Grid: British West Indies Local Datum: Clarke 1866 (Adjusted) Ellipsoid Projection: Transverse Mercator Latitude of Origin: Equator Longitude of Origin: 62 deg 50 min West of Greenwich Scale factor at GS 1985 Scale in metres of Origin: 400,000 in East, 0 in North</p> <p><b>Source</b> - NIAPPNRE - NIAPPNRE GIS, January 2007 - Aerial Photography from May 2007 - Electronic Office - St. Christopher and Nevis - Official Gazette via NICK File, 18 October 2004 ND.47</p> <p><b>Prepared by</b> Nevis Island Administration GIS (NIAPPNRE) Department of Physical Planning Natural Resources and Environment Copyright 2007 Nevis Island Administration</p>	<p><b>Legend</b></p> <ul style="list-style-type: none"> <li>RESOURCES</li> <li>BEACH</li> <li>ROAD</li> <li>ROAD PAVED</li> <li>ROAD UNPAVED</li> <li>TRAIL</li> <li>NAT. RESOURCES</li> <li>BEACH</li> <li>ROAD</li> <li>ROAD PAVED</li> <li>ROAD UNPAVED</li> <li>TRAIL</li> <li>Stream</li> <li>Culvert</li> <li>Dam</li> <li>Earth Dam</li> </ul>
--	---	--	---	---